

2022-23

Concert Bb Major Scale



6 Concert Eb Major Scale



Please play the highest notes you can. If you start on the 2nd space A and need to drop down to the lower scale on your way up, that is fine. Pop back up on the highest note you can play when descending.

11 Concert Ab Major Scale



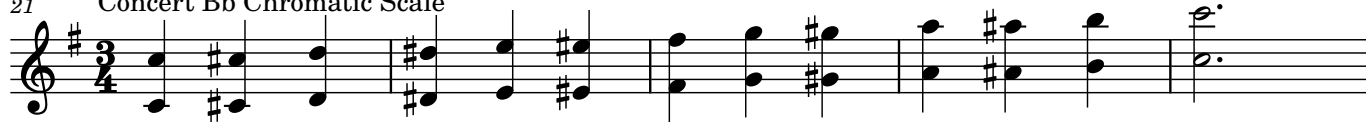
Please play the highest notes you can. If you start on 2nd line G and need to drop down to the lower scale on your way up, that is fine. Pop back up on the highest note you can play when descending.

16 Concert F Major Scale



Choose one or both scales to record, do not mix octaves on this scale.

21 Concert Bb Chromatic Scale



2

31 Exercise #1

Musical notation for Exercise #1, measures 31-38. The piece is in 4/4 time with a key signature of one sharp (F#). The melody starts with a mezzo-forte (*mf*) dynamic and transitions to forte (*f*) in measure 35. It features eighth-note patterns and slurs.

39 Exercise #2

Musical notation for Exercise #2, measures 39-46. The piece is in 2/4 time with a key signature of one sharp (F#). The melody is marked forte (*f*) and includes accents (>) over several notes.

Musical notation for Exercise #2, measures 47-54. The piece is in 4/4 time with a key signature of one sharp (F#). The melody starts piano (*p*) and transitions to forte (*f*) in measure 51. It includes accents (>) and slurs.

55 Exercise #3

Musical notation for Exercise #3, measures 55-58. The piece is in 4/4 time with a key signature of two flats (Bb). The melody starts piano (*p*) and transitions to forte (*f*) in measure 56. It features sixteenth-note patterns and slurs.

Musical notation for Exercise #3, measures 59-62. The piece is in 6/8 time with a key signature of two flats (Bb). The melody is marked mezzo-forte (*mf*) and transitions to forte (*f*) in measure 61. It includes accents (>) and slurs.

Musical notation for Exercise #3, measures 63-66. The piece is in 6/8 time with a key signature of two flats (Bb). The melody is marked mezzo-forte (*mf*) and includes accents (>) and slurs.