

♩ = 100

Concert Bb Major Scale



♩ = 120

Concert Eb Major Scale



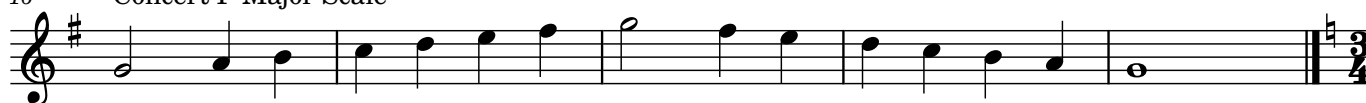
11

Concert Ab Major Scale



16

Concert F Major Scale



21

Concert Bb Chromatic Scale



26



2

31 Exercise #1

Musical notation for Exercise #1, measures 31-38. The piece is in 4/4 time. It begins with a *mf* dynamic and features a series of eighth-note patterns. A crescendo line spans from measure 31 to 34, and a decrescendo line spans from measure 35 to 38. The exercise concludes with a double bar line and a 2/4 time signature change.

39 Exercise #2

Musical notation for Exercise #2, measures 39-46. The piece is in 2/4 time. It starts with a *f* dynamic and consists of eighth-note patterns. Accents (>) are placed over several notes. The exercise ends with a double bar line.

47

Musical notation for Exercise #2, measures 47-54. The piece is in 4/4 time. It begins with a *p* dynamic and features eighth-note patterns. A crescendo line spans from measure 47 to 50, and a decrescendo line spans from measure 51 to 54. The exercise concludes with a double bar line and a 2/4 time signature change.

55 Exercise #3

Musical notation for Exercise #3, measures 55-62. The piece is in 4/4 time. It starts with a *p* dynamic and features sixteenth-note patterns. A crescendo line spans from measure 55 to 58, and a decrescendo line spans from measure 59 to 62. The exercise concludes with a double bar line and a 6/8 time signature change.

59 Exercise 4

Musical notation for Exercise 4, measures 59-66. The piece is in 6/8 time. It begins with a *mf* dynamic and features eighth-note patterns. A crescendo line spans from measure 59 to 62, and a decrescendo line spans from measure 63 to 66. The exercise concludes with a double bar line.

63

Musical notation for Exercise 4, measures 63-70. The piece is in 6/8 time. It starts with a *mf* dynamic and features eighth-note patterns. A crescendo line spans from measure 63 to 66, and a decrescendo line spans from measure 67 to 70. The exercise concludes with a double bar line.