

Baritone Saxophone

Audition Music

2022-23 Season

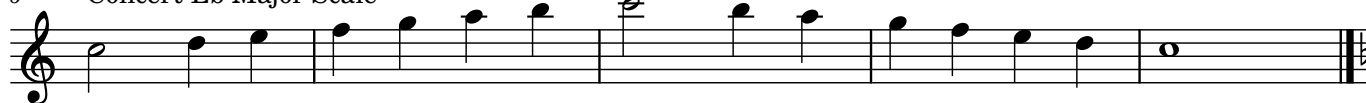
♩ = 100

Concert Bb Major Scale



♩ = 120

Concert Eb Major Scale



11 Concert Ab Major Scale



16 Concert F Major Scale



21 Concert Bb Chromatic Scale



26



2

31 Exercise #1

Musical notation for Exercise #1, measures 31-38. The piece is in G major (one sharp) and 4/4 time. It begins with a mezzo-forte (*mf*) dynamic. The melody consists of quarter and eighth notes, with some slurs and accents. The dynamic changes to forte (*f*) in measure 35. The exercise concludes with a double bar line and a key signature change to two sharps (D major).

39 Exercise #2

Musical notation for Exercise #2, measures 39-46. The piece is in G major (one sharp) and 2/4 time. It starts with a forte (*f*) dynamic. The melody is primarily eighth notes with slurs and accents. The exercise ends with a half note and a fermata.

Musical notation for Exercise #2, measures 47-54. The piece is in G major (one sharp) and 2/4 time. It begins with a piano (*p*) dynamic. The melody features eighth notes with slurs and accents, transitioning to a forte (*f*) dynamic in measure 52. The exercise concludes with a double bar line and a key signature change to D major (two sharps).

55 Exercise #3

Musical notation for Exercise #3, measures 55-62. The piece is in F major (one flat) and 4/4 time. It starts with a piano (*p*) dynamic. The melody is composed of eighth notes with slurs and accents, transitioning to a forte (*f*) dynamic in measure 58. The exercise ends with a double bar line and a key signature change to D major (two sharps).

59 Exercise 4

Musical notation for Exercise 4, measures 59-66. The piece is in D major (two sharps) and 6/8 time. It begins with a mezzo-forte (*mf*) dynamic. The melody consists of eighth notes with slurs and accents, transitioning to a forte (*f*) dynamic in measure 63. The exercise concludes with a double bar line.

Musical notation for Exercise 4, measures 63-66. This block shows the continuation of Exercise 4 from measure 63 to 66. It is in D major (two sharps) and 6/8 time, starting with a mezzo-forte (*mf*) dynamic. The melody features eighth notes with slurs and accents, ending with a fermata on a half note.